

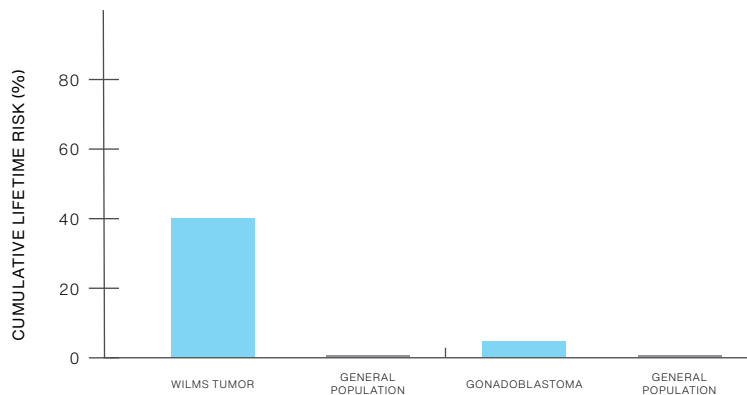
# Understanding Your Positive *WT1* Genetic Test Result

INFORMATION FOR PATIENTS WITH A PATHOGENIC MUTATION OR VARIANT, LIKELY PATHOGENIC

## 5 Things To Know

1	<i>WT1</i> mutation	Your testing shows that you have a pathogenic mutation or a variant that is likely pathogenic in the <i>WT1</i> gene.
2	<i>WT1</i> -related disorder	People with pathogenic or likely pathogenic <i>WT1</i> mutations have <i>WT1</i> -related disorder, a condition that mainly affects the kidneys. Individuals with XY chromosomes may also have genitourinary abnormalities (affecting the reproductive and/or urinary systems); these are uncommon in individuals with XX chromosomes.
3	Cancer risks	People with <i>WT1</i> -related disorder have an increased chance for a type of kidney cancer known as Wilms tumor. Almost all cases of Wilms tumor occur in early childhood. Individuals with XY chromosomes also have an increased chance for a tumor of the developing reproductive organs known as a gonadoblastoma.
4	What you can do	Risk management decisions are very personal. There are options to detect cancer early or lower the risk to develop cancer. It is important to discuss these options with your healthcare provider and decide on a plan that works for you.
5	Family	Family members may also be at risk – they can be tested for the <i>WT1</i> mutation that was found in you. It is recommended that you share this information with your family members so they can learn more and discuss with their healthcare providers.

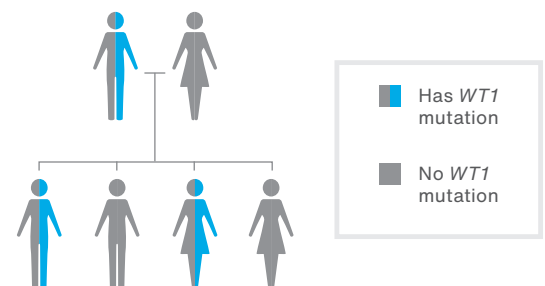
## *WT1* Germline Mutation Lifetime Cancer Risks\*



\* Because risk estimates vary in different studies, only approximate risks are given. Cancer risks will differ based on individual and family history.

## Germline *WT1* Mutations in the Family

There is a 50/50 random chance to pass on a germline *WT1* mutation to each of your children. The image below shows that everyone can carry and pass on these mutations, regardless of their sex at birth.



## RESOURCES

- American Cancer Society [cancer.org](https://www.cancer.org)
- Genetic Alliance [geneticalliance.org](https://www.geneticalliance.org)
- National Organization for Rare Diseases (NORD) [rarediseases.org](https://www.rarediseases.org)
- National Society of Genetic Counselors [nsgc.org](https://www.nsgc.org)
- Canadian Society of Genetic Counsellors [cagc-accg.ca](https://www.cagc-accg.ca)

Please discuss this information with your healthcare provider. The cancer genetics field is continuously evolving, so updates related to your *WT1* result, medical recommendations, and/or potential treatments may be available over time. This information is not meant to replace a discussion with a healthcare provider, and should not be considered or interpreted as medical advice.